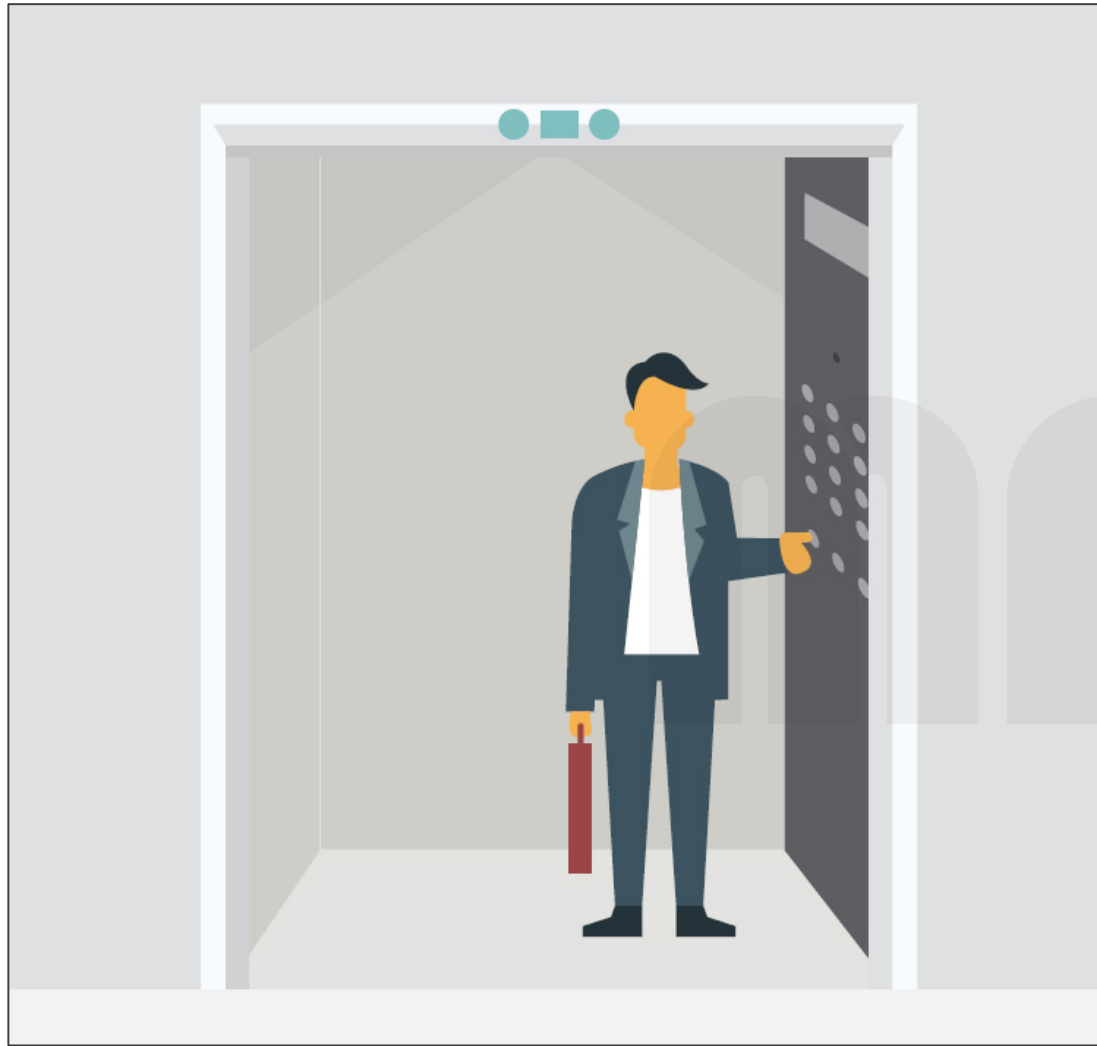


STEP 1

A visitor checks in at desk to visit a tenant.

The concierge verifies the visitor with the tenant.



STEP 2

Visitor proceeds to elevator and calls from desk using the phone/help button.
(normal autodialer operation)



STEP 3

MAD Two-Way terminal shows live video of elevator where call has been made.

Concierge/Security verifies that it is only the authorized person



STEP 4

Concierge selects floor for the elevator to go to.



STEP 5

Elevator takes authorized person to selected floor.

Technical Stuff:

What is required for this feature?

- All elevators, machine rooms and security room connected to the same network.
- Network equipment will be provided by MAD
- Cameras and 2 Way-Video Terminal will be provided by MAD
- 2 conductors (18/20 ga shielded twisted pair preferred) in travelling cable to carry network signal to car.
- Connections between machine rooms and security room typically by others
- Configuration and commissioning by MAD
- Call are placed from Security Desk over the network to an IO board in machine room or COP.