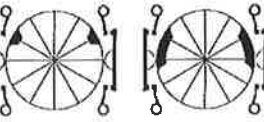
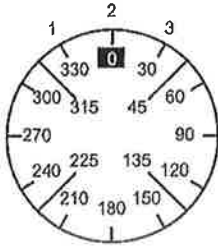




Face Plate



1 3 5 7 9 11 13 15 17 19 21 23

Switching Angle
Total switching Angle

2 4 6 8 10 12 14 16 18 20 22 24

}	1	330																							
		345																							
	2	0																							
		15																							
	3	30																							
		45																							
		60																							
		75																							
		90																							
		105																							
		120																							
		135																							
		150																							
		165																							
		180																							
		195																							
		210																							
	225																								
	240																								
	255																								
	270																								
	285																								
	300																								
	315																								

Look	000	Pcs.	Optional Extras	Jumpers			
Mounting	E	1	S00 L802	10	03	40	02
Face Plate				50	07	80	06
Handle				90	011	120	010
Latch. Mech.	E304			130	015	160	014
Stop	S00.E101.14			170	019	200	018
Stop degree				210	023	240	022
No. of Stages	2			250	027	280	026
Master data	1			290	031	320	030
Reference	GAMMON			330	035	360	034
Date	2008-07-15 23:23			370	039	400	038
Modify Date	2014-11-12 01:51			410	043	440	042
Cust. NO.	M0041			450	047	480	046
Company	MAD						
Version	3						